

## Spare parts list

1	Body
2	Spring
3	Anti-fire packing
4	O-ring
5	Seat ring
6	Seat
7	Ball
8	Stud
9	Anti-fire gasket
10	O-ring
11	Bonnet
12	Check valve
13	Sealant injection valve
14	Anti-static device
15	Stem
16	Sliding bearing
17	Thrust washer
18	O-ring
19	O-ring
20	Anti-fire gasket
21	Seal gland
22	Socket head cap screw
23	Pin
24	Packing
25	Packing gland
26	Hexagon bolt
27	Stop plate
28	Retainer ring
29	Sealant injection valve
30	Air release valve
31	Check valve
32	Sealant injection valve
33	Drainage valve
34	Drainage valve



## Double Block&Bleed Valve

Size: 1/2"~16"

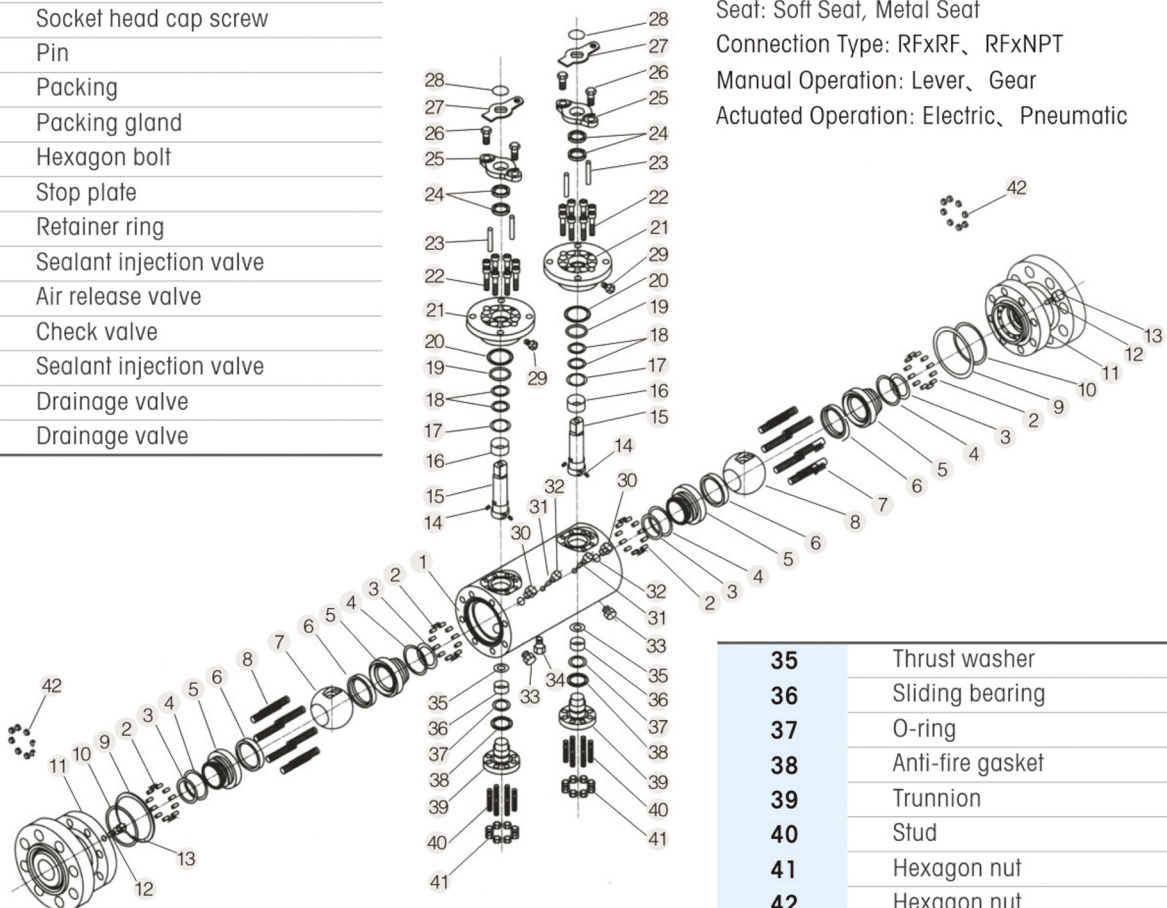
Class: 150LB~2500LB

Seat: Soft Seat, Metal Seat

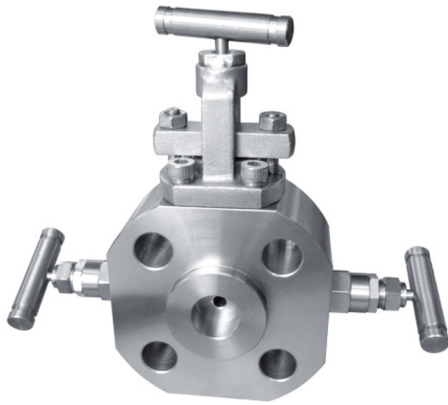
Connection Type: RFXRF、RFXNPT

Manual Operation: Lever、Gear

Actuated Operation: Electric、Pneumatic



35	Thrust washer
36	Sliding bearing
37	O-ring
38	Anti-fire gasket
39	Trunnion
40	Stud
41	Hexagon nut
42	Hexagon nut



### Monoflange Double Block&Bleed Valve

Size: 1/2"~2"

Class: 150LB~2500LB

Seat: Metal Seat

Connection Type: RFxRF、RFxNPT

Manual Operation: Lever



### One-Piece Double Block&Bleed Valve

Size: 1/2"~2"

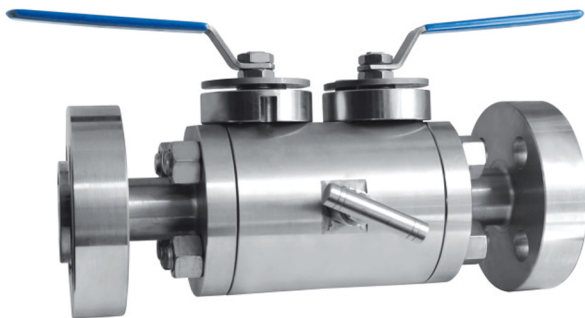
Class: 150LB~2500LB

Seat: Soft Seat, Metal Seat

Connection Type:

RFxRF、RFxNPT、NPTxNPT

Manual Operation: Lever



### Three-Piece Double Block&Bleed Valve

Size: 1/2"~8"

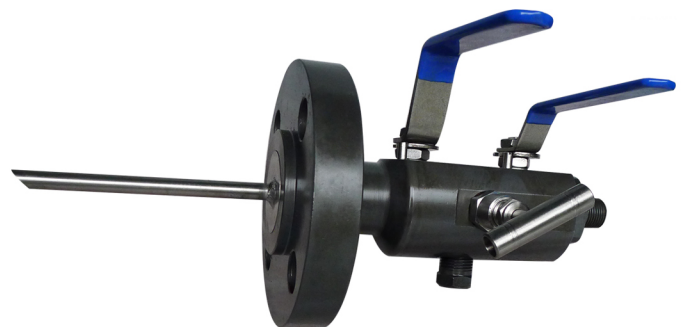
Class: 150LB~2500LB

Seat: Soft Seat, Metal Seat

Connection Type: RFxRF、RFxNPT

Manual Operation: Lever、Gear

Actuated Operation: Electric、Pneumatic



### One-Piece Double Block&Bleed Valve

Size: 1/2"~2"

Class: 150LB~2500LB

Seat: Soft Seat, Metal Seat

Connection Type:

RFxRF、RFxNPT

Manual Operation: Lever